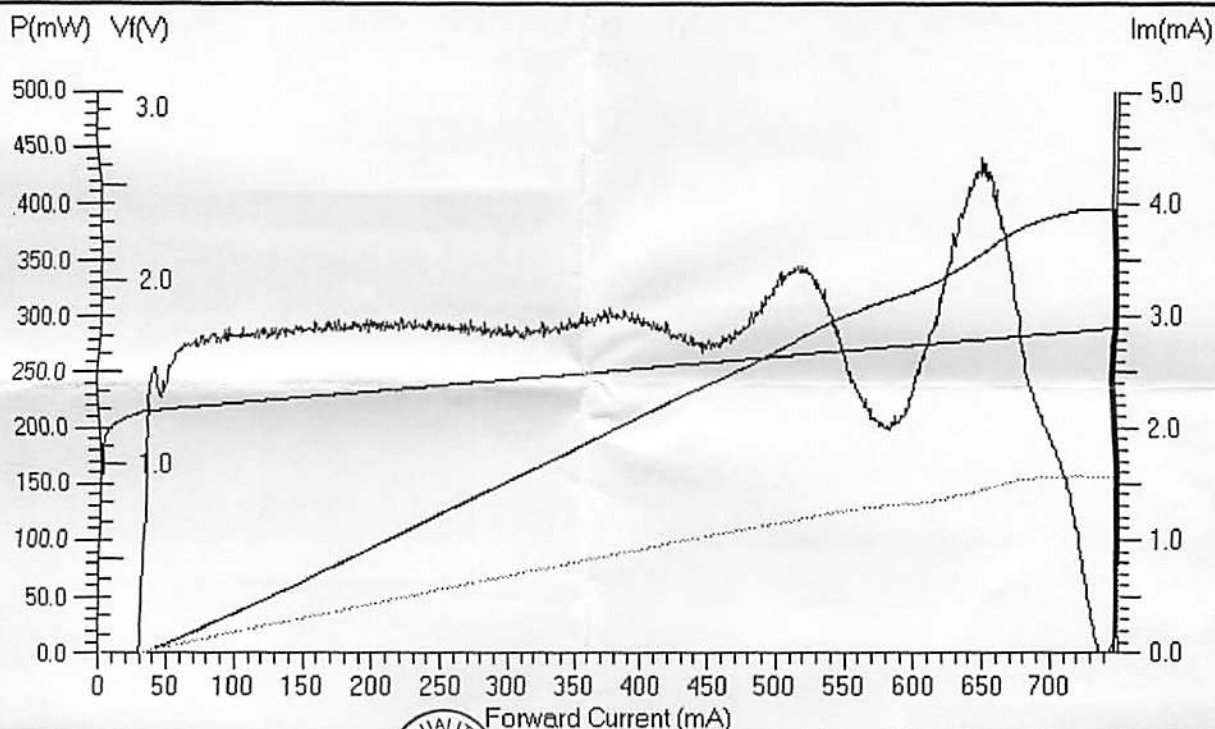


980 Electro Optical Characteristics



Device Ser No. : SO205086.001
Chip Ser No. : 75285Z-W0521
Date : 16 July 2007 21:05:57

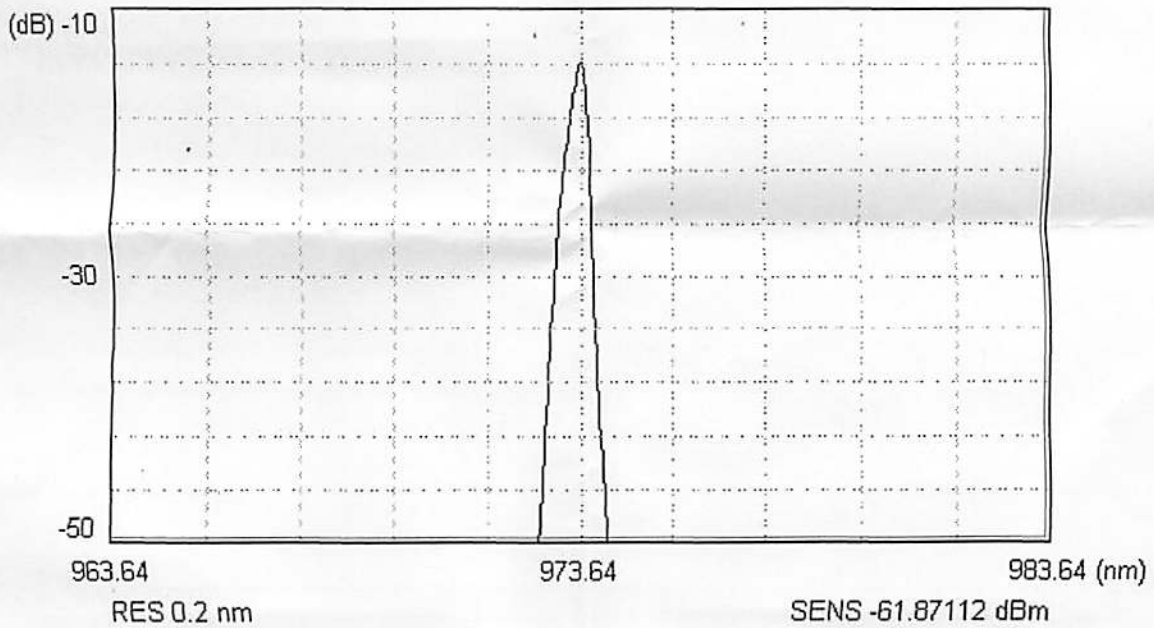


Software Name : 3.03.17
Tester ID : YJW
Node No. : 567

Case temperature 25 Deg C unless stated

Monitor dark current	(nA)	.00	
Threshold current	(mA)	32.10	
Laser forward current @ 150mW facet power	(mA)	201.1	
Fibre power @ 150 mW facet power	(mW)	94.1	
Monitor current (@ If=400 mA)	(mA)	.92	
Monitor Photodiode Responsivity	(uA/mW)	4.37	
Forward Voltage @ 150 mW facet power	(V)	1.40	
Laser Current for 150 mW Fibre Power	(mA)	297.1	
Laser Current for 200 mW & 250 mW Fibre Power	(mA)	383.1	470.2
Laser Current for 300 mW & 350 mW Fibre Power	(mA)	549.1	643.1
Laser Current for 400 mW & 450 mW Fibre Power	(mA)	.0	.0
Linear Power & Current (-20 - 75 Deg C)	(mW) (mA)	291.7	573.0
Rated Power & Current (600 mA limit)	(mW) (mA)	306.8	573.0
Rated Power & Current (650 mA limit)	(mW) (mA)	306.8	573.0
Rated Power & Current (700 mA limit)	(mW) (mA)	306.8	573.0
Rated Power & Current (750 mA limit)	(mW) (mA)	306.8	573.0
TEC Current @ If=700 mA, 75 Deg C Case	(A)	1.23	
TEC Voltage @ If=700 mA, 75 Deg C Case	(V)	1.92	
Thermistor Resistance @ 25 Deg C	(kOhms)	9.70	

980 PUMP SPECTRAL PLOT



Case temperature : 25 C
Submount temperature : 10 kohms
Laser current : 201.1 mA
RMS Centre wavelength : 973.6 nm
RMS width @ -13 dB : 0.20 nm

Software ID : 3.03.17
Test head : PACKAGE
Chip Serial No. : 75285Z-W0521
Node No. : 567
Device Serial No. : SO205086.001



Operator : YJW

16 July 2007 21:02:59