

Loss Measurements Made Easy

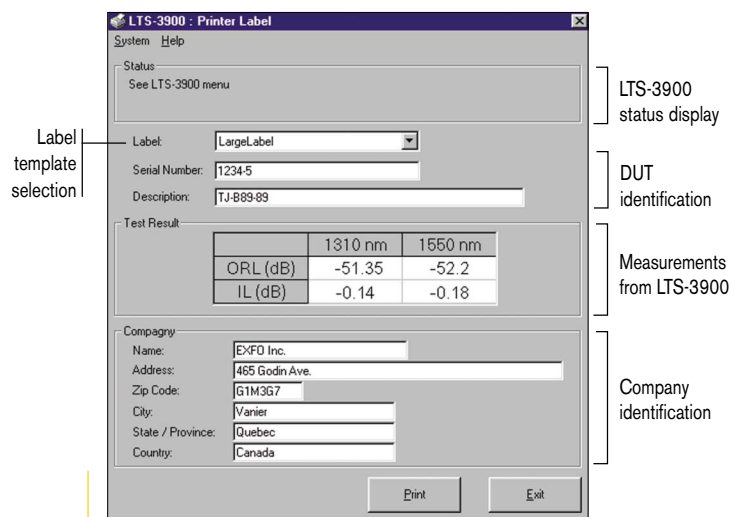
The LTS-3900 Loss Test Set provides a combination of high-resolution optical test tools: a power meter, light source, an ORL meter as well as an optional Visual Fault Locator (VFL). Power and loss measurements may be displayed in dBm or watts. Take advantage of ORL testing as well as manual data storage, programmed data acquisition and label printing of the insertion loss and optical return loss test results.

The LTS-3900 is particularly well-suited to the most demanding laboratory and manufacturing qualification applications, including component testing, fiber assembly testing and a wide variety of power measurements.



Automation and Printing Capabilities

The model that includes an ORL meter features a step-by-step procedure for automated ORL and insertion loss tests. Once the procedure is initiated, the LTS-3900 guides you through the test steps and lets you store the results at the end. With a label printer connected to your PC, you can take advantage of the LTS-3900 label-printing utility to generate labels of your LTS-3900 test results. In RS-232 control mode, real-time measurements are automatically displayed in the Test Result section.



LTS-3900 Label-Printing Utility Window

Visual Fault Locator (optional)

Using a VFL is the easiest way to identify bends, faulty connectors or splices, and other causes of signal loss for a distance of up to 5 km. The VFL creates a bright red glow at the exact location of a fault on singlemode or multimode fibers. This bright signal can be continuous (CW) or modulated (1 Hz) and is visible through most yellow-jacketed fibers.

Easy Testing

The LTS-3900 is truly intuitive and easy to use. Most functions can be performed at the touch of a button. With our clear display, you can read any measurement up to 30 feet away, thus providing you with greater mobility.

Remote Control Capability

Standard GPIB and RS-232 interface and control codes enable remote operation from any compatible PC or test station. You can program your own software solutions for complex test procedures and benefit from the added convenience of computer capabilities.

Exceptional Storage

The LTS-3900 enables you to store up to 512 readings manually for future reference or viewing. You can also run a program that will store up to 1024 data points, with each data point containing the value of the measurement, wavelength and offset. The user can store up to 20 different wavelengths in the setup; for a multiple-user environment, 10 different setups can be stored in the LTS-3900.

Rack Mount

The LTS-3900 can be used as a stand-alone instrument, or it may be mounted in a 19-inch rack (option).

Applications

- Insertion and return loss measurements
- Component testing
- Fiber-assembly testing
- Power measurements

Multiple Functions

The LTS-3900 can be operated as

- an optical power meter
- a stable optical source
- an optical return loss (ORL) meter
- a visual fault locator (VFL) (option)

SPECIFICATIONS¹

Power meter ⁵	LTS-3902	LTS-3902X	LTS-3903
Power meter	Ge (1 mm)	GeX (2 mm)	InGaAs (1 mm)
Wavelength range (nm)	780 to 1625	780 to 1625	840 to 1650
Measurement range ² (dBm)	+10 to -73	+21 to -62	+4 to -75
Uncertainty ^{3,4} (%)	± 5 (0 to -53 dBm)	± 5 (+10 to -42 dBm)	± 5 (0 to -55 dBm)
Linearity ^{2,4,6} (dB)	± 0.05 (0 to -53 dBm)	± 0.05 (+10 to -42 dBm)	± 0.05 (0 to -55 dBm)
Resolution ⁶ (dB)	0.01 (+10 to -53 dBm) 0.1 (-53 to -63 dBm) 1 (-63 to -73 dBm)	0.01 (+21 to -42 dBm) 0.1 (-42 to -52 dBm) 1 (-52 to -62 dBm)	0.01 (+4 to -55 dBm) 0.1 (-55 to -65 dBm) 1 (-65 to -75 dBm)

Laser Source Specifications

Laser source ⁴	02BL	03BL	23BL	BR23BL
Wavelength (nm)	1310 ± 25	1550 ± 25	1310 ± 25 1550 ± 25	1310 ± 25 1550 ± 25
Spectral width ⁷ (nm)	≤ 5	≤ 5	≤ 5/5	≤ 5/5
Output power ⁸ (dBm)	≥ -3.5	≥ -5.5	≥ -3.5/-5.5	≥ -5/-7
Stability (8 h) ¹⁰ (dB)	± 0.10	± 0.10	± 0.10	± 0.10

LED Source Specifications

LED source ⁴	12C	12D	23B
Wavelength (nm)	850 ± 30 1300 ± 50	850 ± 30 1300 ± 40	1310 ± 25 1550 ± 25
Spectral width ⁷ (nm)	≤ 50/145	≤ 50/145	≤ 80
Output power ⁸ (dBm)	≥ -18/-22	≥ -15/-18	≥ -25/-30
Stability ¹⁰ (15 min) (dB)	± 0.01	± 0.01	N/A
Stability ¹⁰ (8 h) (dB)	± 0.05	± 0.05	± 0.1

Optical Return Loss Specifications

Optical return loss ⁹	BR23BL
Range (dB)	65
Uncertainty ^{3,4} (dB)	± 0.4
Resolution ⁹ (dB)	0.01 (0 to -45 dBm) 0.1 (-45 to -55 dBm) 1 (-55 to -65 dBm)

VFL**Visual fault locator**

Emitter type	Laser
Wavelength (nm)	650 ± 10
Output power ^a (CW) (dBm)	-1
Modulation (Hz)	1

General Specifications

Dimensions	11 cm x 22 cm x 28 cm	(4 1/2 in x 8 1/2 in x 11 1/4 in)
Temperature		
Operation	0 °C to +40 °C	(32 °F to +104 °F)
Storage	-20 °C to +60 °C	(-4 °F to 140 °F)
Humidity	0 to 80 % non-condensed	

Notes

- All specifications are for a temperature of 23 °C (73 °F) with FC/PC connector unless otherwise specified.
- At 1310 nm.
- Uncertainty is a function of the resolution and power level detected.
- After a warmup time of 20 minutes.
- Followed by an offset nulling for the power meter.
- Resolution and linearity are functions of the power level detected.
- As defined per Telcordia TR-TSY-000887, rms for lasers and FWHM for LEDs.
- Typical output power.
- Specification valid at a temperature of 23 °C (73 °F) with FC/APC connector.
- The stability is expressed as ± half the difference between the maximum and minimum values measured during the period.

ORDERING INFORMATION**LTS-39XX-XXXXXX-XX-XXX-XX****Detector code**

02 = Ge
 02X = High-power Ge
 03 = InGaAs

CW source code

12C/D = 850/1300 nm LED
 23B = 1310/1550 nm LED
 02BL = 1310 nm laser
 03BL = 1550 nm laser
 23BL = 1310/1550 nm laser
 BR23BL = 1310/1550 nm laser
 with ORL (only available with APC Universal Interface)

Source connector code

76 = HMS-10/AG (EI only)
 90 = ST (EI only)
 95 = E 2000
 EI-EUI-28 = UPC/DIN 47256
 EI-EUI-89 = UPC/FC (Narrow key)
 EI-EUI-91 = UPC/SC
 EA-EUI-28 = APC/DIN 47256
 EA-EUI-89 = APC/FC (Narrow key)
 EA-EUI-91 = APC/SC

VFL connector code (optional)

VFL 50 = FC
 VFL 54 = SC
 VFL 74 = ST

Specify model number and the connector adapter you wish to obtain (one free connector adapter included):

FOA-216: SMA 906 low reflection
 FOA-222: FC low reflection: FC, FC (/PC/SPC/UPC/APC), NEC-D3
 FOA-228: DIN 47256 (LSA) low reflection: DIN 47256 (/PC/APC)
 FOA-232: ST low reflection: ST, ST (/PC/SPC/UPC)
 FOA-240: Diamond HMS-0, HFS-3 (3.5 mm) low reflection

FOA-276: FSMA HMS-10/AG, HFS-10/AG low reflection
 FOA-284: Diamond HMS-10, HFS-13 low reflection
 FOA-296: E-2000 low reflection: E-2000 (/PC/APC)
 FOA-298: LC low reflection
 FOA-299: MU low reflection

Corporate Headquarters > 400 Godin Avenue, Vanier (Quebec) G1M 2K2 CANADA | Tel.: 1 418 683-0211 | Fax: 1 418 683-2170 | info@exfo.com

Toll-free: 1 800 663.3936 (USA and Canada) | www.exfo.com

EXFO America	4275 Kellway Circle, Suite 122	Addison, TX 75001 USA	Tel.: 1 800 663-3936	Fax: 1 972 836-0164
EXFO Europe	Le Dynasteur, 10/12 rue Andras Beck	92366 Meudon la Forêt Cedex FRANCE	Tel.: +33.1.40.83.85.85	Fax: +33.1.40.83.04.42
EXFO Asia-Pacific	151 Chin Swee Road, #03-29 Manhattan House	SINGAPORE 169876	Tel.: +65 6333 8241	Fax: +65 6333 8242
EXFO China	Beijing New Century Hotel Office Tower, Room 1754-1755 No. 6 Southern Capital Gym Road	Beijing 100044 P. R. CHINA	Tel.: +86 (10) 6849 2738	Fax: +86 (10) 6849 2662

EXFO is certified ISO 9001 and attests to the quality of these products. This device complies with Part 15 of the FCC Rules. Operation is subject to the following two conditions: (1) this device may not cause harmful interference, and (2) this device must accept any interference received, including interference that may cause undesired operation. EXFO has made every effort to ensure that the information contained in this specification sheet is accurate. However, we accept no responsibility for any errors or omissions, and we reserve the right to modify design, characteristics and products at any time without obligation. Units of measurement in this document conform to SI standards and practices. **Contact EXFO for prices and availability or to obtain the phone number of your local EXFO distributor.** For the most recent version of this spec sheet, please go to the EXFO website at <http://www.exfo.com/specs> In case of discrepancy, the Web version takes precedence over any printed literature.