

EDFA-GB-SP-XX



DEVICE

EDFA Gain Block Module, Single Pump

OVERVIEW

The Optilab EDFA-GB is an erbium doped fiber amplifier gain block. It consists of pump lasers, PD monitors and other fiber amplifier optical circuits. The user can add control electronics to drive the amplifier. This module features a single, forward pump model.

FEATURES

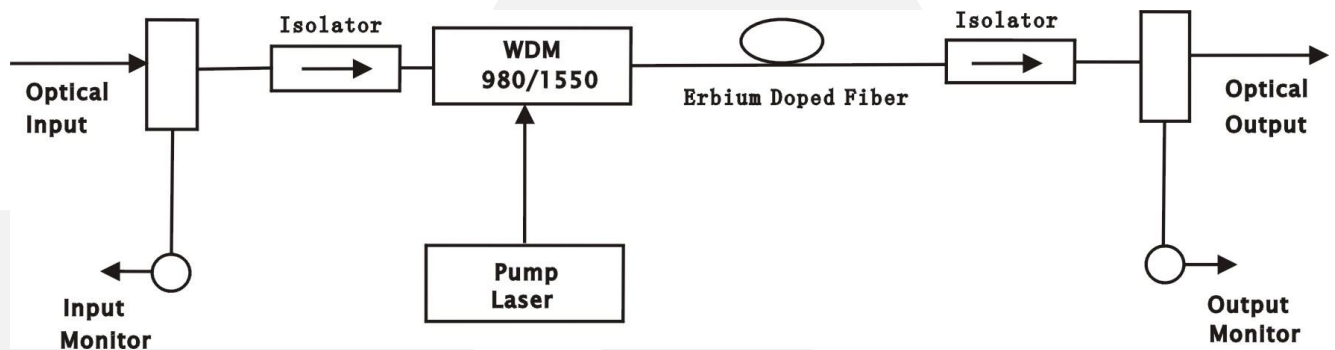
- Wide wavelength operation range
- Up to +20 dBm Saturation Power
- Single Pump Model
- User can add control systems

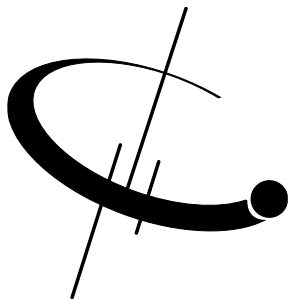
USE IN

- Photonic subsystems
- Fiber optic link amplification
- OEM integration for
 - DWDM networks
 - DFC/CATV
 - RFoG/PON

FUNCTIONAL DIAGRAM

Forward Pump Model:





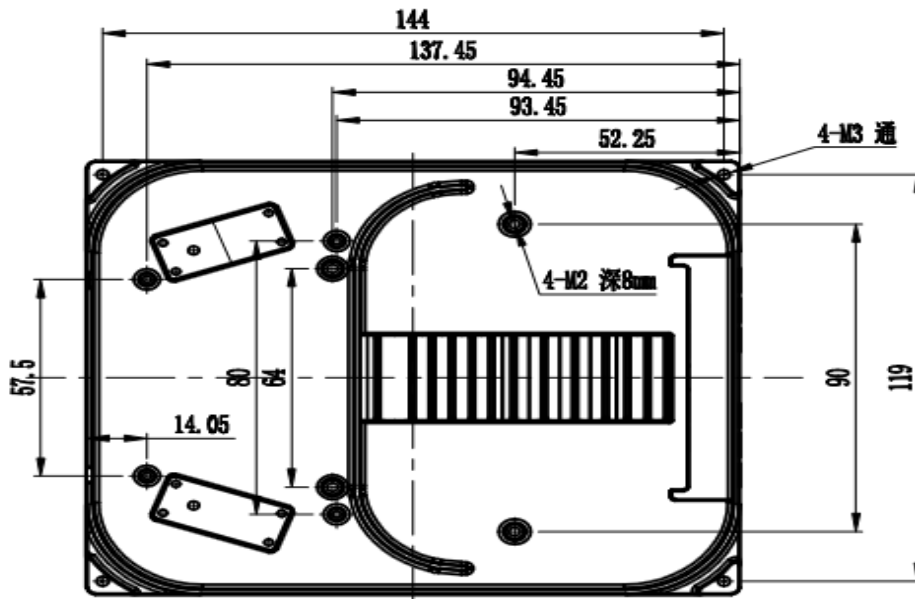
EDFA-GB-SP-XX

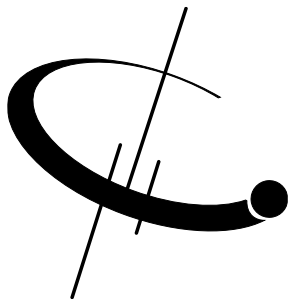
SPECIFICATIONS

GENERAL

Wavelength Range	1530 nm ~ 1565 nm
Optical Input Power	-10dBm ~ 10dBm
Optical Output Power	+16 / +18 / +20 dBm
Operating Case Temperature	0°C to +70°C
Storage Temperature	-40°C to +85°C
Operating Humidity	5 ~ 95% RH
Optical Connector	SC/APC by default, other option available upon request

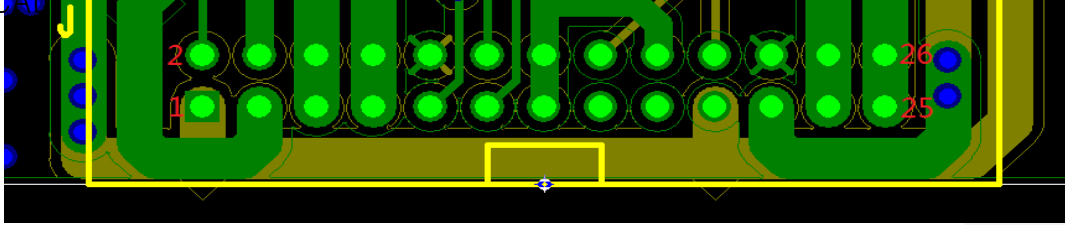
MECHANICAL DRAWING





EDFA-GB-SP-XX

ELECTRICAL PINOUT



pin	Definition	pin	Definition
1	+3.3V/Pump2 laser diode anode (+)	14	+5V /Input monitor PD cathode(-)
2	Output monitor PD anode (+)	15	NC
3	Pump2 laser diode cathode (-)	16	Pump1 Thermistor monitor
4	+5V/Output monitor PD cathode(-)	17	NC
5	Pump2 TEC(-)	18	+5V/Pump2 PD cathode (+)
6	Pump2 TEC(-)	19	+3.3V/ Pump1 laser diode anode (+)
7	Pump2 TEC(+)	20	Pump1 PD Anode(-)
8	Pump2 TEC(+)	21	Pump1 laser diode cathode (-)
9	Pump2 Thermistor monitor	22	GND
10	GND	23	Pump1 TEC(-)
11	Pump2 PD Anode(-)	24	Pump1 TEC(-)
12	Input monitor PD anode (+)	25	Pump1 TEC (+)
13	+5V/Pump2 PD cathode (+)	26	Pump1 TEC (+)

ORDERING OPTION

EDFA-GB-SP-XX

XX: Output saturation level, 16 to 20 dBm

